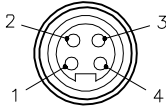

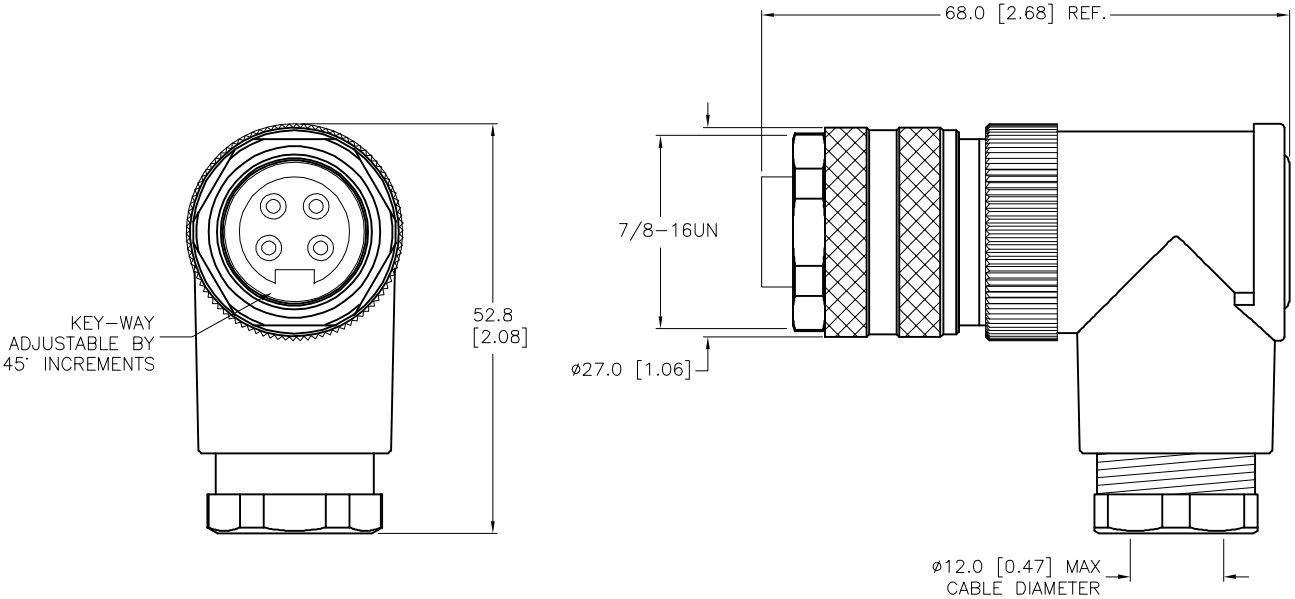
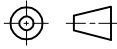



FEMALE END VIEW		SPECIFICATIONS	
		HOUSING MATERIAL/COLOR	PBT or NYLON/BLACK
		CONTACT MATERIAL/PLATING	BRASS/GOLD
		COUPLING NUT MATERIAL/PLATING	DIECAST ZINC/NICKEL
		RATED CURRENT [A]	9.0 A (16 AWG), 15.0 A (14 AWG)
		RATED VOLTAGE [V]	600 V
		MAXIMUM WIRE SIZE	14 AWG
		TERMINATION METHOD	SCREW TERMINAL
		CABLE GRIP RANGE	10–12mm
		TEMPERATURE RATING	–25°C to +85°C (–13°F to +185°F)
		PROTECTION CLASS	IP67



SOURCE DRAWING - FOR REFERENCE ONLY

FIELD WIREABLE MINIFAST RIGHT-ANGLE CONNECTOR					RELATED DOCUMENTS		3RD ANGLE PROJECTION		THIS DRAWING IS CONFIDENTIAL AND THE PROPERTY OF TURCK INC. USE OF THIS DOCUMENT WITHOUT WRITTEN PERMISSION IS PROHIBITED.		3000 CAMPUS DRIVE MINNEAPOLIS, MN 55441 1-800-544-7769 (763) 553-7300 (763) 553-0708 fax www.turck.us	
					1. 2. 3. 4.							
					MATERIAL		ALL DIMENSIONS DISPLAYED ON THIS DRAWING ARE FOR REFERENCE ONLY					
					SEE SPECIFICATIONS							
FINISH		CONTACT TURCK FOR MORE INFORMATION		DRFT TV		DATE 06/02/17		DESCRIPTION B 4241-0/13.5				
SEE SPECIFICATIONS				APVD L.H.		SCALE 1=1.0						
							UNIT OF MEASUREMENT		IDENTIFICATION NO.		REV	
							MILLIMETER [INCH]		U2-29172		D	
							DO NOT SCALE THIS DRAWING		FILE: U2-29172		SHEET 1 OF 1	